

Appearance of Stony Coral Tissue Loss Disease (SCTLD) on susceptible species

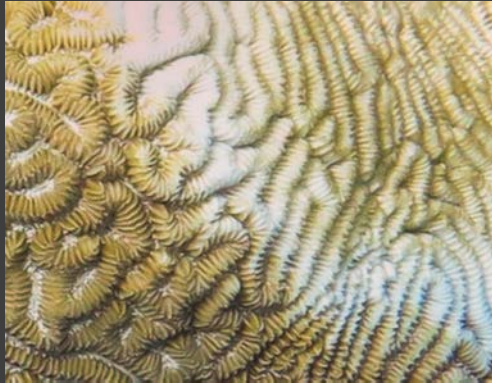


Karen Neely

NOVA SOUTHEASTERN
UNIVERSITY

NSU
Florida

Meandrina meandrites (Maze Coral)



Defined disease margin line

Bleached disease margin line

Multiple lesions merging together

Dichocoenia stokesii (Elliptical Star Coral)



Single lesion (anywhere on colony).
Margin may be jagged or smooth and linear.

Multi-focal lesions

Dendrogyra cylindrus (Pillar Coral)



K. Neely

Defined disease margin line



K. Neely

Sloughing tissue



K. Neely

Bleached disease margin line



K. Neely



K. Neely



K. Neely



K. Neely

Many lesions on colony

Eusmilia fastigiata (Smooth Flower Coral)



Defined disease margin line



Bleached disease margin line

Colpophyllia natans (Boulder Brain Coral)



Defined disease margin line



Mottled disease margin line



Bleached disease margin line

Pseudodiploria strigosa (Symmetrical Brain Coral)



Defined disease margin line

Bleached disease margin line

Pseudodiploria clivosa (Knobby Brain Coral)



K. Neely



FWC - CREMP



FWC - CREMP

Defined disease margin line

Diploria labyrinthiformes (Grooved Brain Coral)



Defined disease margin line

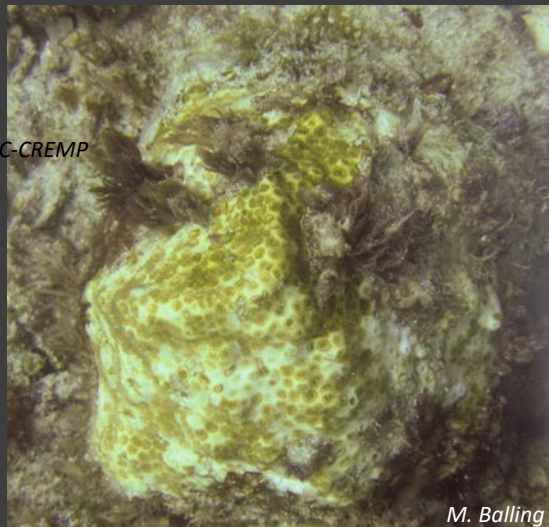
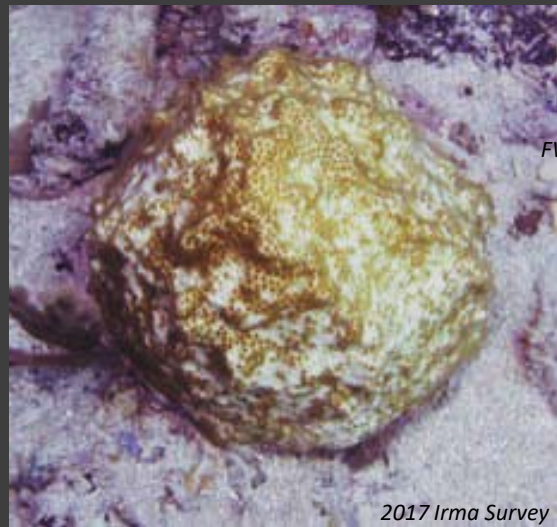
Mottled disease margin line

Bleached disease margin line

Solenastrea bournoni (Smooth Star Coral)



Linear margins



Spotchy margins

Orbicella faveolata (Boulder Star Coral)



K. Neely



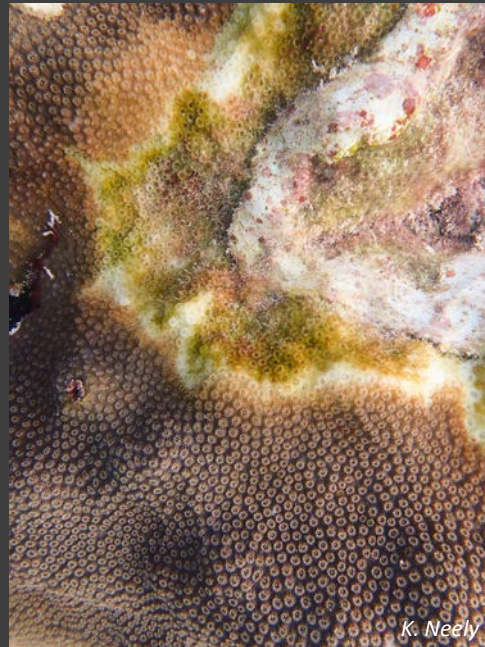
K. Neely



K. Neely



FWC-CREMP



K. Neely

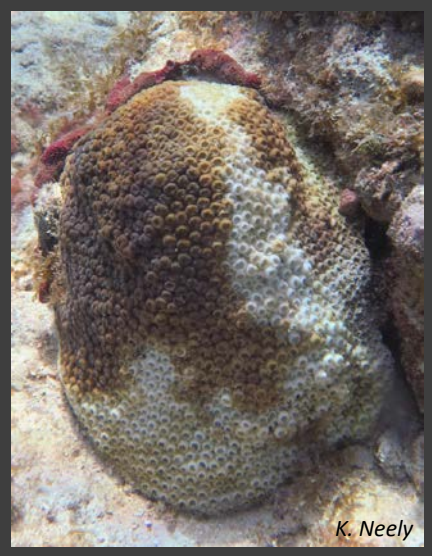


FWC-CREMP

Defined disease margin line

Bleached disease margin line

Montastraea cavernosa (Great Star Coral)



Defined disease margin line

Bleached disease margin line

K. Neely

FWC - CREMP

FWC - CREMP

N. Ordway

K. Neely

M. Eakin

K. Neely

Agaricia agaricites (Lettuce Coral)



Defined disease margin line



FWC-CREMP



FWC-CREMP

Mottled disease margin line

Siderastrea siderea (Massive Starlet Coral)

SCTLD appearance on *S. siderea* is poorly defined and may be highly variable. Images on these pages represent colonies within the disease zones showing unusual mortality patterns, but may not all be a result of SCTLD.



Defined disease margin lines



Bleached disease margin lines



Mucus margin lines

Siderastrea siderea (Massive Starlet Coral) continued

SCTLD appearance on *S. siderea* is poorly defined and may be highly variable. Images on these pages represent colonies within the disease zones showing unusual mortality patterns, but may not all be a result of SCTLD.



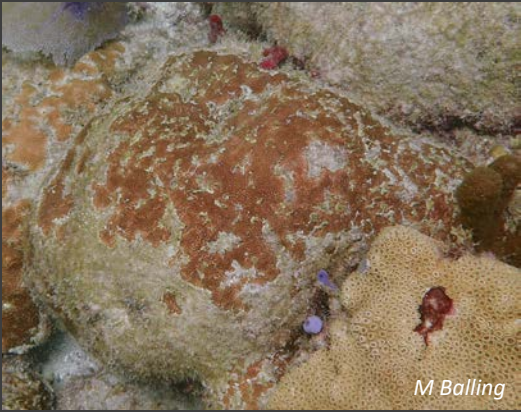
2017 Irma Survey



J. Bartoszek



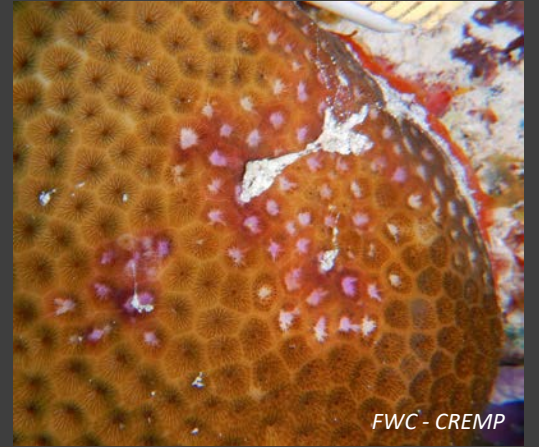
FWC - CREMP



M Balling



FWC - CREMP



FWC - CREMP

Spotchy margin lines

Pale margin lines

Dark-edge margin lines